

GRUNDIG

Hair Styler Straight & Curls

User Manual



HS 7030

EN



01M-8910153600-2621-01

Please read this manual first!

Dear Customer,

Thank you for purchasing a Grundig product. We hope that you get the best results from your product which has been manufactured with high quality and state-of-the-art technology. Therefore, please read this entire user manual and all other accompanying documents carefully before using the product and keep it as a reference for future use. If you handover the product to someone else, give the user manual as well. Follow all warnings and information in the user manual.

Meanings of the symbols

Following symbols are used in various sections of this manual:



Important information and useful hints about usage.



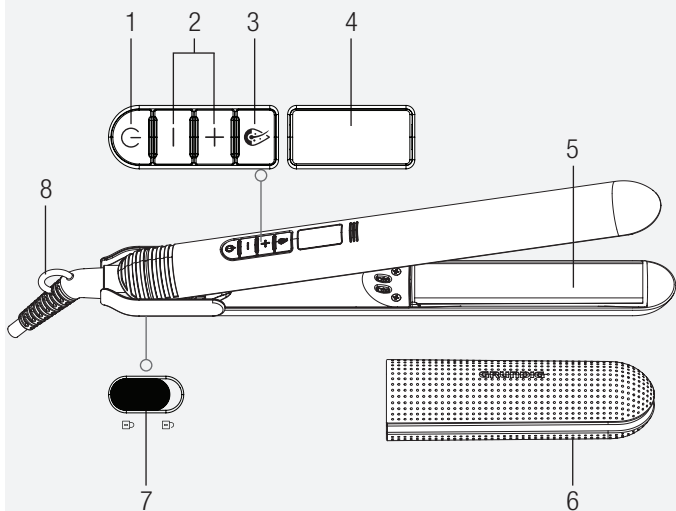
WARNING :
Warnings against dangerous situations concerning the security of life and property.

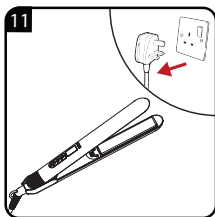
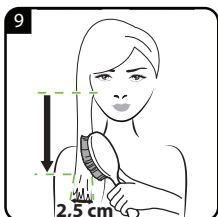
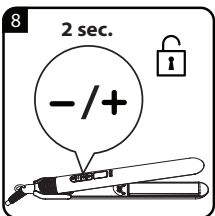
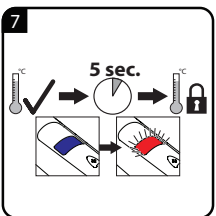
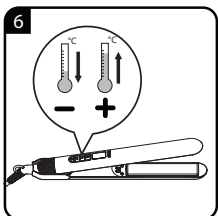
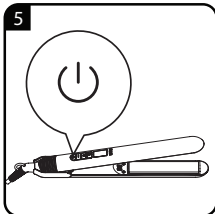
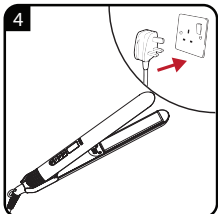
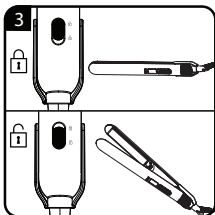
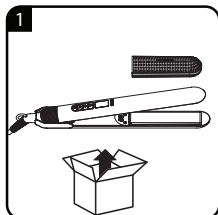


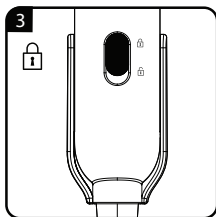
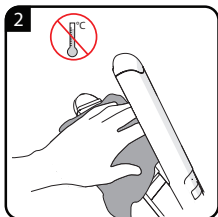
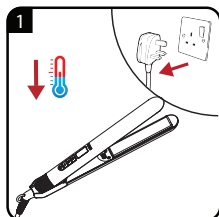
Electrical insulation class.



This product has been produced in environmentally-friendly, state-of-the-art facilities.







EN

OPERATION



CLEANING AND CARE

1 Important safety and environmental instructions

Please read these instructions carefully before using the device! Please follow all the safety instructions! Damage may be caused by using the device incorrectly.

Please keep these instructions for future reference. In the event that the device is passed on to a third party, these instructions must also be passed on to the new owner or user.

This device is intended for domestic use only.

1.1 Safety warnings

- Never use the device in a bath or shower, over a sink or in basin filled with water. Never use with wet hands.
- Do not immerse the device in water or allow contact with water, even when cleaning the device.
- If you use this device in the bathroom, it must be unplugged after use, as water near the device can still be hazardous even when the device has been turned off.

1 Important safety and environmental instructions

- Always unplug the device before cleaning it or carrying out any maintenance.
- For additional protection, install an RCD (Residual Current Device) with residual current rating no higher than 30 mA in the circuit. Ask your electrician about this.
- The device must never be covered by anything, e.g. towels.
- During operation, never place the device on any soft upholstery, cushions or blankets, paper or cardboard, plastics or combustible or unprotected polished surfaces.
- The device can become very hot. Never leave hair between hot styling plates for more than a few seconds.
- Never let the hot styling plates touch your face, neck or scalp. Do not touch with bare hands.

1 Important safety and environmental instructions

- Unplug the device immediately after use. Do not unplug by pulling on the power cord. Place the device on a heat-resistant surface and allow it to cool down.
- Do not use the device if there is visible damage to it.
- Our GRUNDIG household appliances all comply with current valid safety standards. If there is any damage to the device or to its power cord, it must be repaired by a Service Centre or replaced, to avoid any potential risk of danger. Any repair performed incorrectly by an unqualified person could present safety risks and endanger the user.
- The cable must be positioned so that there is no risk of accidentally pulling on it or tripping over it.
- Always keep the device out of reach of children.

1 Important safety and environmental instructions

- In the event that this device is to be used by children aged 8 and over or by persons with reduced physical, sensory or mental capabilities or with lack of experience or knowledge, the user must be supervised or instructed regarding the safe use of the device and must have an understanding of the consequent potential risks of danger. Children must not play with this device. In the event that children carry out cleaning of the device or perform user maintenance, they must be fully supervised.
- When the device is on, it must never be left unattended.
- Never open the device, under any circumstances. No liability shall be accepted for damage caused by incorrect use.
- Please check that the voltage on the rating plate (on the device handle) corresponds to the local power supply voltage. The only way to disconnect the device from the power supply is to unplug it.

1 Important safety and environmental instructions

- Never wrap the power cord around the device.
- Never use the device on or near combustible or flammable areas or furniture. Do not allow the device to be touched or covered by flammable materials, such as curtains, fabric, walls etc. Ensure that the device is always kept at a safe distance away from flammable materials and furniture.
-  **WARNING** Do not use this appliance near bathtubs, showers, basins or other vessels containing water.
- Burn hazard. Keep appliance out of reach from young children, particularly during use and cool down.
- Always place the appliance with the stand, if any, on a heat-resistant, stable flat surface.

1 Important safety and environmental instructions

1.2 Compliance with the WEEE Directive and Disposing of the Waste Product:

Compliance with the WEEE Directive and Disposing of the Waste Product:
This product complies with EU WEEE Directive (2012/19/EU) and UK WEEE Regulations (S.I.2013/3113 and its amendments). This product bears a classification symbol for waste electrical and electronic equipment (WEEE).



This symbol indicates that this product shall not be disposed with other household wastes at the end of its service life. Used device must be returned to official collection point for recycling of electrical and electronic devices. To find these collection systems please contact to your local authorities or retailer where the product was purchased. Each household performs important role in recovering and recycling of old appliance. Appropriate disposal of used appliance helps prevent potential negative consequences for the environment and human health.

1.3 Compliance with RoHS Directive

The product you have purchased complies with EU RoHS Directive (2011/65/EU) and UK RoHS Directive 2012. It does not contain harmful and prohibited materials specified in the Directive.

1 Important safety and environmental instructions

1.4 Package information




Packaging materials of the product are manufactured from recyclable materials in accordance with our National Environment Regulations. Do not dispose of the packaging materials together with the domestic or other wastes. Take them to the packaging material collection points designated by the local authorities.

1.5 Plug Wiring

The moulded plug on this appliance incorporates a 13 A fuse. Should the fuse need to be replaced an ASTA approved BS1363 fuse of the same rating must be used. Do not forget to refit the fuse cover. In the event of losing the fuse cover, the plug must not to be used until a replacement fuse cover has been fitted.

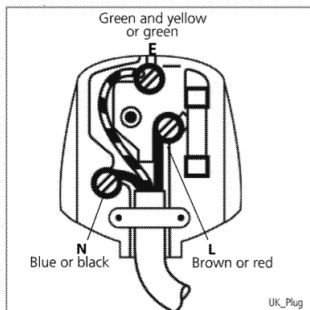
Colour of the replacement fuse cover must be the same colour as that visible on the pin face of the plug. Fuse covers are available from any good electrical store.

1.5.1 Fiting a different plug

- As the colours of the wires in the mains lead of this appliance may not correspond with the coloured markings identifying the terminals on your plug, proceed as follows:
- Brown cable = L (Live)
- Blue cable = N (Neutral)
- Green/yellow cable must be connected to ground (E)  line

1 Important safety and environmental instructions

- With the alternative plugs a 13 A fuse must be fitted either in the plug or adaptor or in the main fuse box. If in doubt contact a qualified electrician.



2 Overview

2.1 Controls and parts

See picture on page 3.

1. On/Off button
2. Temperature touch control
3. Hair protection mode activation button
4. LCD Display
5. Ceramic-coated styling plates
6. Protective cover for plates
7. Plate locking button
8. Power cord with hanging lug

2.2 Technical data

Power supply:

100–240 V~, 50–60 Hz

Output: 52–54 W

Electrical insulation class: II

Technical and design modifications reserved.

The values which are declared in the markings affixed on your appliance or other printed documents supplied with it represent the values which were obtained in the laboratories pursuant to the pertinent standards. These values may vary according to the usage of the appliance and ambient conditions.

3 Operating instructions

3.1 Hair protection mode (3)

The intelligent sensor analyzes the hair 30 times per minute and selects the optimal temperature for gentle styling and ideal heat protection.

3.2 Hair structure

The device allows for individual temperature settings. The following individual settings are recommended to work best with the specific hair structures listed:

- For fine, brittle, colour-treated, blonde hair: 130 °C to 170 °C
- For normal hair: 170 °C to 210 °C
- For strong, resistant, thick hair: 210 °C to 230 °C

3.2.1 Auto Shut Off

- The device will switch off automatically one hour after you finish using it.

3.3 Styling Possibilities

With your Hair Styler HS 7030, you can:

- Straighten hair
- Style the ends (turning in or out)
- Form soft cascading waves and curls

3.4 Temperature setting

1. If you touch the temperature selection (2) and move it from a lower to a higher setting, the corresponding temperature will flash on the LCD display. Once the styling plates reach the required temperature, the temperature display stops flashing and is on continuously.
2. If you touch the temperature selection (2) and move it from a higher to a lower setting, the corresponding temperature will flash on the LCD display. The temperature display will light continuously once the plates have reached the required temperature.

3 Operating instructions

3.5 Lock Setting

The temperature setting is locked automatically 5 seconds after the required temperature has been set.

This means that the temperature setting cannot be changed once the device is in use. If you want to change the temperature setting, simply press and hold the +/- button for 2 seconds to unlock temperature setting.

4 Information

4.1 Cleaning and Care

1. Switch off the device and unplug (8) from the power supply.
2. Before cleaning, allow the device to cool down completely. The device can become very hot; it may take up to 45 minutes to cool down.
3. Clean the housing and the styling plates only using a soft damp cloth.

4.2 Storage

- If the device is not used for a long time, it must be stored carefully.
- Ensure that the device is unplugged from the power supply, has cooled down completely and is dry.

- Lock the device's styling plates in position, using the plate locking button (7).
- Attach the protective cover supplied. This protective cover will prevent any scratching of the styling plates.
- Do not wrap the power cord around the device.
- Store in a cool dry place.
- Ensure that the device is always kept out of reach of children.



For commissioning, general use and cleaning, please observe the instructions on pages 4-5 of this operating manual.

24 months breakdown and repair guarantee

Guarantor: **Beko plc, 1 Greenhill Crescent, Watford, Hertfordshire. WD18 8UF**

The guarantee does not in any way diminish your statutory or legal rights.

Your appliance has the benefit of our manufacturer's guarantee which covers the product for 24 months from the date of original purchase.

This gives you reassurance that if within that time, your appliance is proven to be defective because of either workmanship or materials, we will at our discretion either repair or replace your appliance.

The appliance must be correctly installed, located and operated in accordance with the instructions contained in the user manual. The guarantor disclaims any liability for accidental or consequential damage.

The Guarantee is subject to the following conditions:

- Documentary proof of the original purchase date is provided.
- The appliance has been installed and operated correctly in accordance with our operating and maintenance instructions.
- The appliance is used only on the electricity supply shown on the rating plate.
- The appliance has only been used for normal domestic purposes.
- The appliance has not been altered, serviced, dismantled or otherwise interfered with by any person.
- The appliance is used in the United Kingdom or the Republic of Ireland.
- Any parts removed during repair work or any product that has been replaced becomes our property.
- The guarantee is not transferrable if the product is resold.

The Guarantee does not cover:

- Transit, installation or delivery damage.
- Accidental damage.
- Misuse or abuse.
- Replacement of any consumable item or accessories. These include but are not limited to: plugs, cables, light bulbs, knobs, filters and flaps.
- Repairs or replacements required as a result of unauthorised repairs or inexpert installation that fails to meet the requirements contained in the user guide or instruction book.
- Repairs to products used in commercial or non-residential household premises.

How to obtain after sales service, help or general advice

Please keep your purchase receipt or other proof of purchase in a safe place as you will need to show us this document if your product requires attention within the guarantee period.

Please also record your product details below, which will allow you to access our services more quickly and help us identify your product. The model number is printed on the front of the user guide and the serial and model number is shown on your products rating plate.

Model number	Serial number	Purchased from	Date of purchase

Please call our UK based Customer Service department if you need urgent help or advice from us:

United Kingdom and Northern Ireland: **0333 207 9920**
Republic of Ireland: **01 691 0203**
You can also contact us through our website: **www.grundig.co.uk**

GRUNDIG

Beko Grundig Deutschland GmbH
Thomas-Edison-Platz 3
63263 Neu-Isenburg

www.grundig.co.uk